



**AGRO-COMMODITIES**

**PRODUCTS  
CATALOG**

# SUMMARY



▪ AGRO-COMMODITIES PRODUCTS / ORIGINS	P2
▪ SUGAR	P3
- ICUMSA 45	
- ICUMSA 80	
- ICUMSA 100-150	
- ICUMSA 200	
- ICUMSA 600/800	
- ICUMSA 800/1200 (VHP)	
- ICUMSA 1600/2000	
- ICUMSA 4600 MAX	
- RAW SUGAR VHP	
▪ ICUMSA 45 SPECIFICATIONS	P5
▪ ICUMSA 45 ALLOCATION & PRODUCTION	P6
▪ PROCESSING	P7
▪ SUGARCANE PROCESSING	P8
▪ MILLS AND REFINERY	P9
▪ GRAINS & OILS	P10
- GRAINS & OILS	P11
- NON-GMO SOYBEAN SPECIFICATIONS	P12
- GMO SOYBEAN SPECIFICATIONS	P13
- NON-GMO & GMO YELLOW CORN (MAIZE)	
- WHEAT (SOFT & HARD) & WHEAT FLOUR	
- BARLEY	
- RICE	
- OILS	
▪ COMMERCIAL INFORMATION	P14
▪ STANDARD PROCEDURE	P15
▪ PAYMENT GUARANTEES	P16
▪ SET OF DOCUMENTS /SGS	P17
▪ TYPICAL PROCEDURE CHART	P18
▪ TYPICAL CHRONOGRAM	P19
▪ ANNEXES	
- ICUMSA 45 PRICE LIST (UPDATED EACH MONTH)	
- GMO & NON-GMO SOYBEAN PRICE LIST (UPDATED EACH MONTH)	
- GENERAL TERMS & CONDITIONS /PROCEDURES (UPDATED EACH MONTH)	

## SUGAR

- ICUMSA 45 (Brazil)
- ICUMSA 80 (Brazil)
- ICUMSA 100-150 (Brazil)
- ICUMSA 200 (Brazil)
- ICUMSA 600-1200 (Brazil)
- VHP (Brazil)



## GRAINS

- NON-GMO SOYBEAN (Brazil)
- GMO SOYBEAN (Brazil)
- NON-GMO YELLOW CORN (Brazil)
- GMO YELLOW CORN (Brazil)

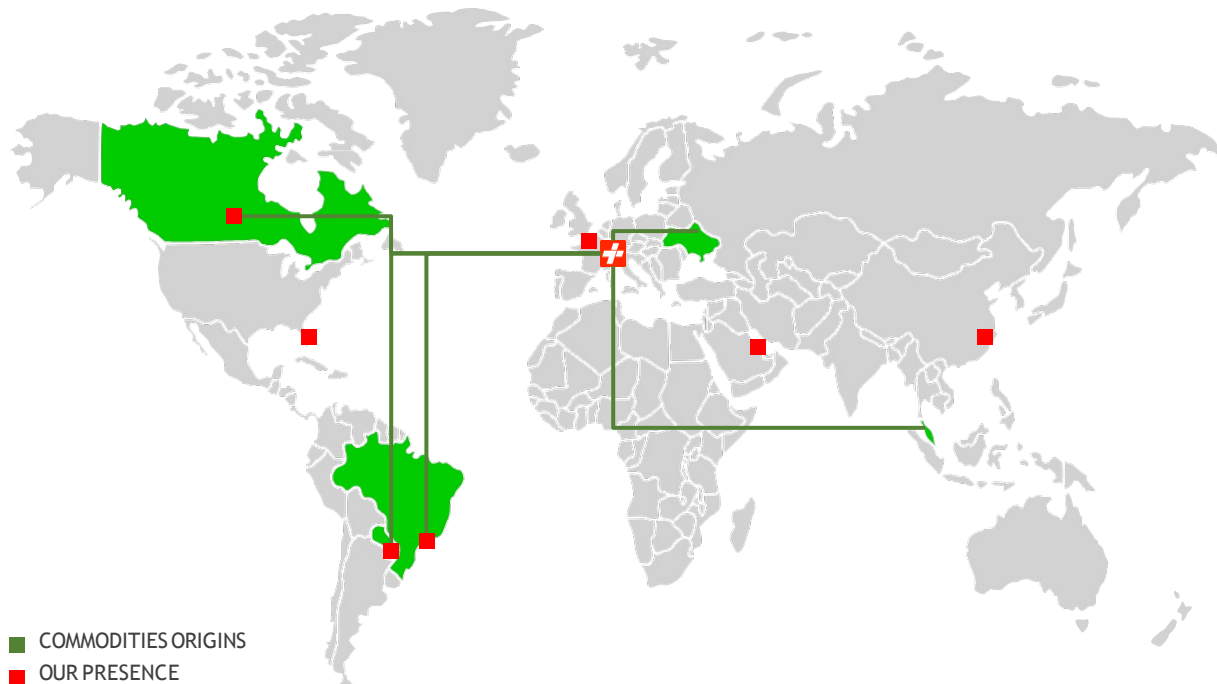


- SOFT WHEAT (Canada)
- DURUM WHEAT (Canada)
- WHEAT FLOUR (Canada)
- BARLEY (Canada)



## OILS

- OILS (Ukraine Malaysia)



OFFICIAL REPRESENTATIVE OF PRODUCERS, COOPERATIVES, MILLS & ALLOCATIONHOLDERS





**SUGAR**

## ICUMSA 45 ■ ■ ■

### WHITE REFINED GRANULATED SUGAR

IC45 is the most popular /highly refined form of sugar. Sparkling White Refined Granulated Sugar is of vegetable origin, consisting primarily of sugar cane natural sucrose sweetener, obtained through the milling process, refining and granulation of dissolving crystal sugar, purification, evaporation, crystallization of the syrup, then centrifugation, drying, cooling, and screening of final product, free of genetically modified organisms. IC45 is most often sold direct to consumers in the form of sugar cubes, bags of sugar, and in sugar sachets.

## ICUMSA 80 ■ ■ ■

### REFINED SUGAR CANE “EXTRA”

Intended and reasonably expected use product intended for consumption after addition and mixing in beverages and/or as an ingredient in food preparations.

## ICUMSA 100-150 ■ ■ ■

### WHITE CRYSTAL T1 /WHITE CRYSTAL T2

Extra White Crystal Sugar: Considered food-grade sugar with an appearance of solid with well-defined white crystals. This sugar is used in large-scale baking, making of drinks, or the production of other foodstuffs.

SPECIFICATIONS AND PRICES ONREQUEST

## ICUMSA 200 ■ ■ ■

### SPECIAL WHITE CRYSTAL SUGAR

Special White Crystal Sugar: Food-grade sugar suitable for less demanding applications where appearance is not integral to the function of the sugar.

## ICUMSA 600-800 ■ ■ ■

### LIGHT BROWN CONSUMABLE CRYSTAL SUGAR

Consumable Light Brown Crystal Sugar is of vegetable origin, consisting primarily of sugarcane natural sucrose sweetener, with an appearance of solid, well-defined light brown color crystals and generally regarded as tasty.

## ICUMSA 800-1200 ■ ■ ■

### VERY HIGH POLARIZATION (VHP) RAW SUGAR

VHP Raw Sugar is of vegetable origin, consisting primarily of sugarcane natural sucrose sweetener, sugar obtained by direct manufacture in the plants from sugar cane. It is presented in the form of uniform solid brown crystals. Quite popular due to the high sucrose content and cheaper than lower ICUMSA values as it is less refined.

## ICUMSA 1600-2000 ■ ■ ■

### RAW SUGAR

Suitable for further refining with the appearance of solid dark brown crystals, and in some areas of the industry may be incorporated into foodstuffs or beauty products.



## ICUMSA 4600 MAX ■ ■ ■

### VERY RAW SUGAR

Generally regarded as basic raw sugar which is sent to refineries to be processed into any of the above grades of sugar.



## REFINED ICUMSA 45 WHITE SUGAR SPECIFICATIONS

APPEARANCE	WHITE CRYSTAL HOMOGENEOUS SOLID POWDER. UNIFORM PARTICLE
ORIGIN	BRAZIL
ICUMSA	45 RBU ICUMSA, ATTENUATION INDEX UNITS' METHOD 10-1978
COLOR	CRYSTAL SPARKLING WHITE
FLAVOUR	SWEET
<b>TECHNICAL CHARACTERISTICS AND MICROBIOLOGICAL ANALYSIS</b>	
RBU 'ATTENUATION INDEX UNITS'	ASTM 4-1978
POLARIZATION AT 20C	99.80% MINIMUM
ASH CONTENT	0.04% MAXIMUM
MOISTURE	0.04% MAXIMUM
GRAIN SIZE	0.60 mm
GRANULATION	FINE STANDARD
SOLUBILITY	100% DRY AND FREE FLOWING
RADIATION	NORMAL WITHOUT PRESENCE OF CESIUM OR IODINE SO2: CERTIFIED
SMELL	FREE OF ANYSMELL
MAGNETIC PARTICLES	MG/K4
SOLUBILITY	MG/K20
SO2	20 PPM (CAN BE REDUCED-ON SPECIAL REQUEST)
HPN STAPH AUREUS	PER 1G-NIL
POISONOUS	PHYTOSANITARY CERTIFICATE
SEDIMENTS	NONE
REDUCING SUGAR	0.010% MAXIMUM IN DRY MASS
MAX AS	1 P.P.M.
MAX OS	2 P.P.M.
MAX CU	3 P.P.M.
MICROBIOLOGICAL LIMITED	PATHOGENIC BACTERIA INCLUDING SALMONELLA PER 1G-NIL BACILLUS PER 1G-NIL
SUBSTANCE	SOLID CRYSTAL
TRACE PESTICIDE	MAX. MG/KG BASE-DDT 0.005-PHOTOXIN 0.001-HEXACHLORAN-GAMMA ISOMER 0.005
CROP YEAR	2022-2023
PACKAGING	PP Bags with PELining. /Bulk.



**UNICA**

BRAZILIAN SUGARCANE INDUSTRY ASSOCIATION  
ETHANOL • SUGAR • ENERGY

BRAZIL

ICUMSA  International Commission  
for Uniform Methods

# ICUMSA 45 ALLOCATION /PROD.

## ALLOCATION CAPACITY

ICUMSA 45 | 1 MILLION MT PER MONTH

12.500 MT UP TO 1 M MT X 12 MONTHS CONTRACTS	CIF / FOB
12.500 MT UP TO 300.000 MT SPOTS	CIF
WE ALSO SELL 27 MT CONTAINERS	CIF

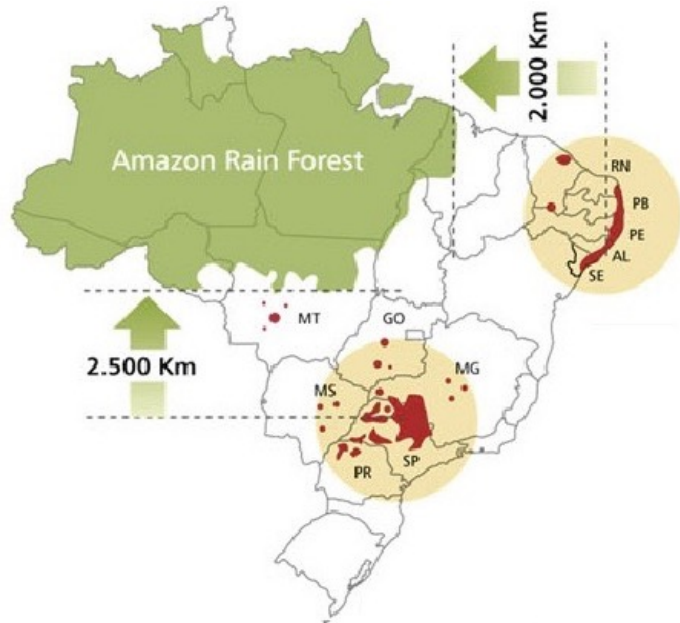
## LOADING PORT

Porto de Santos

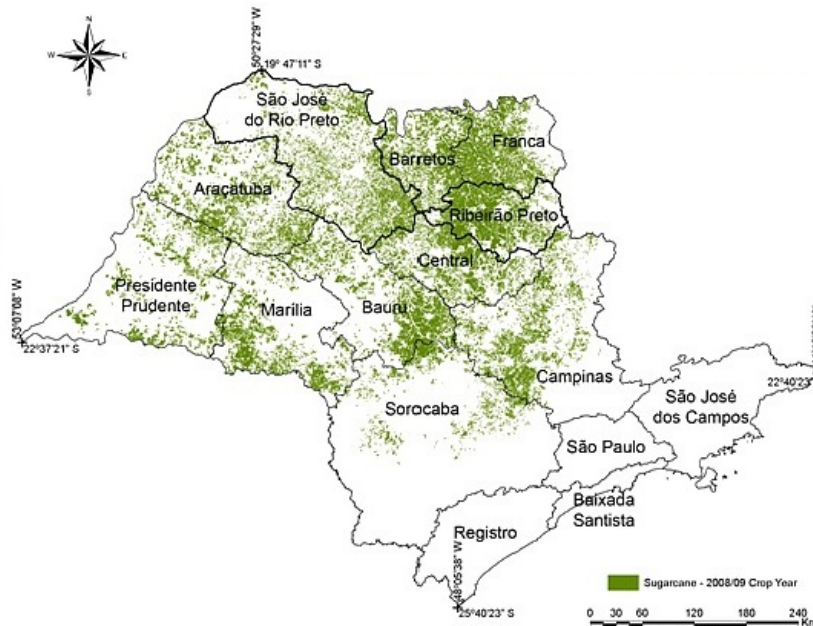


## SUGARCANE PRODUCTION SITES

Our main Brazilian production sites are located in the São Paulo State as well as our multiple (7) mills. Sugar from Brazil is shipped to and loaded at the Porto de Santos port. Sugar from Paraguay is shipped to and loaded at the Paranaguá free zone port.



SUGARCANE PRODUCTION MAP



SÃO PAULO STATE SUGARCANE PRODUCTION AREAS





PROCESSING



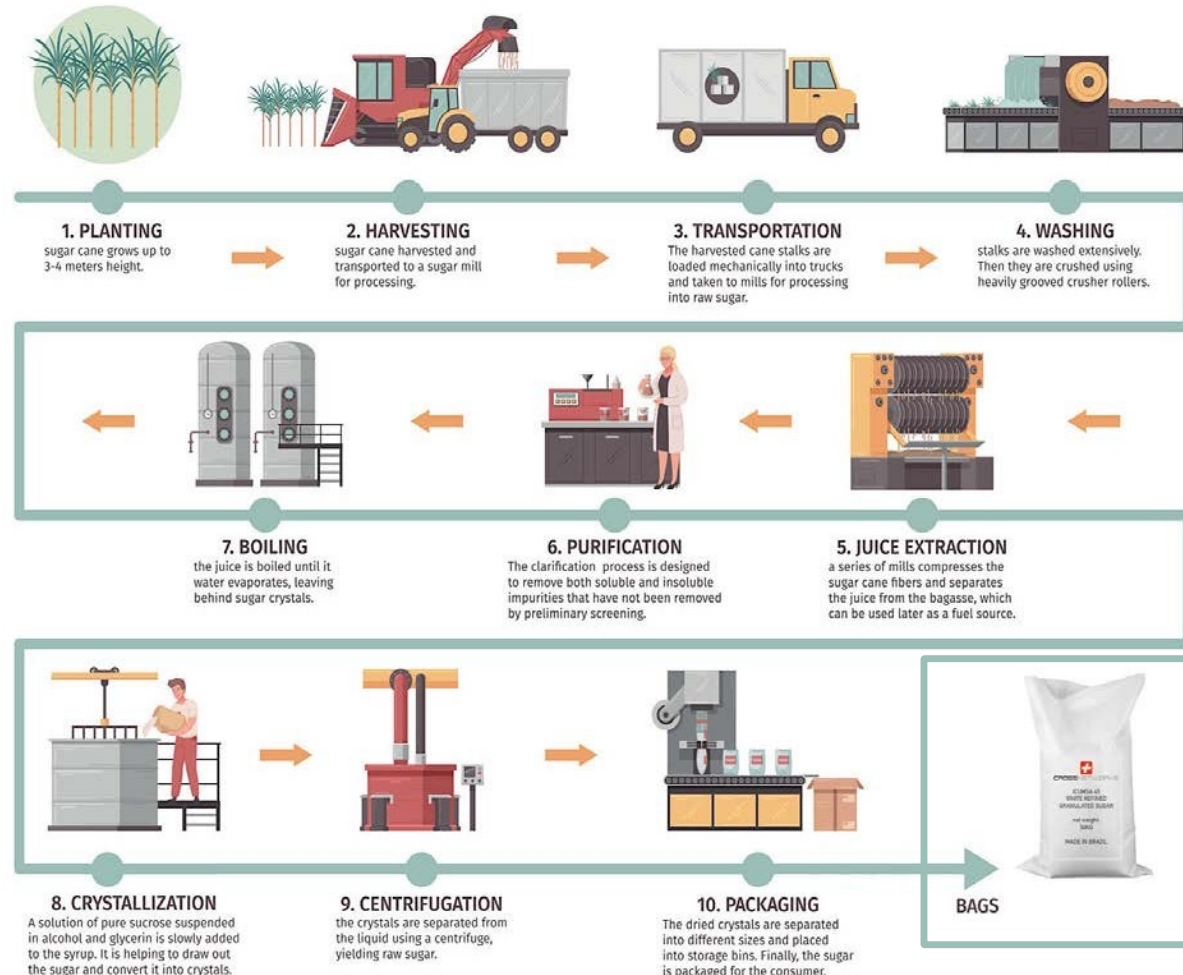
# SUGARCANE PROCESSING

## SUGARCANE PROCESSING

Sugar processing refers to the series of steps involved in extracting sugar from sugar cane. Here's a brief overview of the processing steps for producing refined sugar:

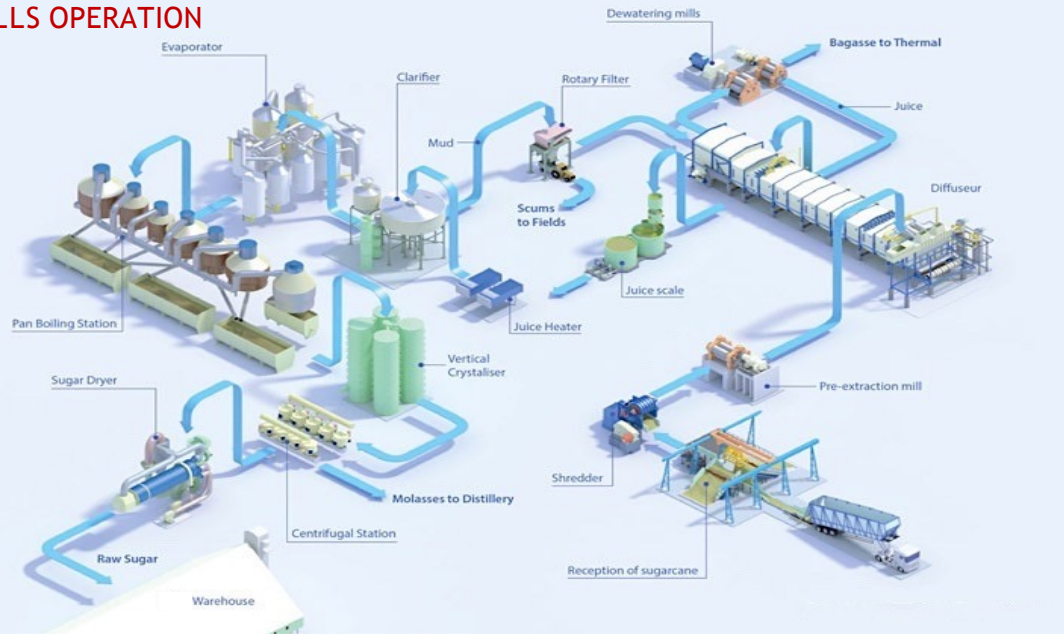
1. Planting: Sugarcane is grown (12-18 months) in tropical climates.
2. Harvesting: Sugar cane is harvested when they have reached maturity.
3. Transport: To the mills and refinery (see next page).
4. Washing / Grinding: The harvested crops are crushed with the milling tandems to extract the juice, which contains sugar.
5. Juice Extraction: The juice is then clarified to remove impurities such as dirt, mud, and plant materials (Juice pre-heaters and liming vessels).
6. Clarification / Purification: Evaporation: The clarified juice is concentrated through evaporation to increase the sugar content.
7. Boiling / Evaporation: Water evaporated leaving behind sugar crystals.
7. Crystallization: Sugar crystals are formed from the concentrated juice.
9. Centrifugation / Separation / Drying: The sugar crystals are separated from the remaining liquid (syrup or molasses) using centrifuges. The separated sugar crystals are dried (rotary dryers) to remove excess moisture.
10. Packaging / Storage: The final sugar product is packaged for export (50kg polypropylene bags or 1200kg big bags).

Different types of sugar (such as granulated, brown, or powdered) can be produced by varying the processing methods and further refining the sugar crystals. The exact processes can vary depending on the type of sugar and the equipment used by a particular sugar processing facility.

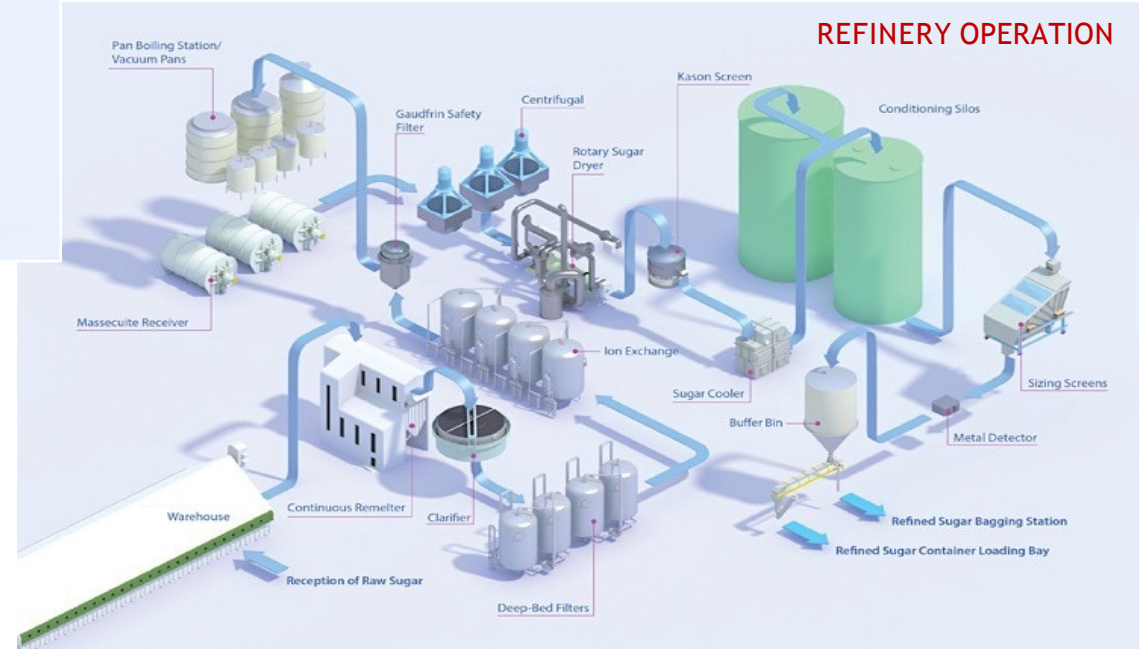


# MILLS & REFINERY

## MILLS OPERATION



## REFINERY OPERATION





# GRAINS & OILS

## SOYBEAN ALLOCATION CAPACITY

NON-GMO SOYBEAN | 300.000 MT PER MONTH

GMO SOYBEAN | 300.000 MT PER MONTH



## YELLOW CORN (MAIZE) ALLOCATION CAPACITY

GMO YELLOW CORN | 500.000 MT PER MONTH

NON-GMO YELLOW CORN | 500.000 MT PER MONTH

FEED YELLOW CORN | 500.000 MT PER MONTH



## WHEAT (SOFT & HARD) ALLOCATION CAPACITY

CLASS 1 WHEAT OVER PROTEIN

CLASS 2 WHEAT / CLASS 3 WHEAT / CLASS 4 WHEAT

WHEAT | 350.000 MT PER MONTH



## WHEAT FLOUR ALLOCATION CAPACITY

WHEAT FLOUR | 30.000 MT PER MONTH



## BARLEY ALLOCATION CAPACITY

CLASS 1 / CLASS 2 / CLASS 3 BARLEY GRAIN

BARLEY | 33.000 MT PER MONTH



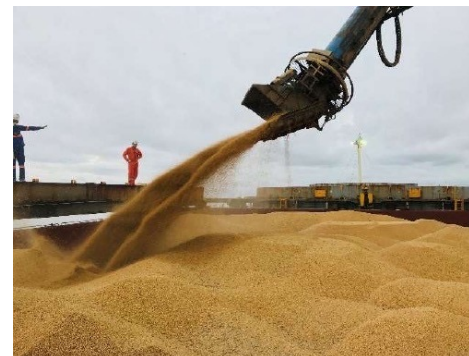
## RICE (ON DEMAND)

WHITE RICE 5% BROKEN

WHITE RICE 25% BROKEN

WHITE RICE 100% BROKEN

RICE PARBOILED



## REFINED OILS (ONDEMAND)

SUNFLOWER OIL (Ukraine)

SOYBEAN OIL (Brazil)

CORN OIL (Brazil)

CANOLA OIL (Brazil)

PALM OIL (Malaysia)



## NON-GMO YELLOW SOYA BEANS SPECIFICATIONS

PRODUCT SPECIFICATIONS: NON-GMO SOYBEAN (HUMAN USE)	
PRODUCT	NON-GMO YELLOW SOYA BEANS (HUMAN USE) CONFORM TO INTERNATIONAL STANDARDS
ORIGIN / CROP	BRAZIL / HARVEST 2022
MILDEW VARIATION	NO ROCK, GRAVEL, SAND, PIECES OF WOOD OR ANY PARTICLES HARMFUL FOR HUMAN CONSUMPTION
MOLDY BEANS	0.2% MAX.
MILDEW VARIATION	0.5%
MOLDY BEANS	0.2% MAX.
MIN. LIMITS OF TEST WEIGHT LBS/BU	56% MIN.
IMMATURE BEANS	3.0% MAX.
MOISTURE	13% MAX.
NSI (NITROGEN SOLUBLE INDEX)	87% MIN
PROTEIN (DRY BASIS)	40% MIN
DAMAGE KERNELS	2.0% MAX.
FOREIGN MATERIAL	BELOW 2.0%
ARSENIC COMPOUND	1 PPM MAX. (ACCORDING TO AS203 CONTENT)
MERCURY COMPOUND	NOT FOUND
PHOSPHATES	0.05 PPM MAX. (ACCORDING TO PH3 CONTENT)
CYANIDES	5 PPM MAX. (ACCORDING TO HCN CONTENT)
MARATHON	3 PPM MAX.
ORGANOLEPTIC PARAMETERS	
APPEARANCE	ROUNDED SOYBEAN, YELLOW COLORED WITH WHITELINE
CONSISTENCY	SOLID, FIRM
ODOR	PRODUCT FEATURE
FLAVOR	PRODUCT FEATURE
DIMENSIONS	AVERAGE DIAMETER 3.6MM APPROX.
MICROBIOLOGICAL PARAMETERS VALUE (COLONY FORMING UNIT - UFC/G)	
TOTAL AEROBIC COUNT	<1,000,000
YEASTS AND MOLDS	<10,000
E. COLI	<100
SALMONELLA	ABSENT



12.500 MT UP TO 300.000 MT  
X 12 MONTHS CONTRACTS

CIF / FOB

12.500 MT UP TO 300.000 MT  
SPOTS

CIF

## GMO YELLOW SOYA BEANS SPECIFICATIONS

PRODUCT SPECIFICATIONS: GMO SOYBEAN (HUMAN USE)	
PRODUCT	GMO YELLOW SOYA BEANS (HUMAN USE)
ORIGIN	BRAZIL
PROTEIN	NO LESS THAN 45% (BETWEEN 45 AND 48% FOR HIGH LEVEL PROTEIN RATE SOYBEAN)
MOISTURE CONTENT	13.5% MAX.
OI CONTENT	18.5% MIN.
DRY MATTER	89%
FOREIGN MATERIAL	2.0% MAX.
FREE FATTY ACIDS	1.0% MAX.
ACID DETERGENT FIBER	5.30%
SPLITS	20% MAX.
DISCOLORED SEEDS	2.0% MAX.
TOTAL DAMAGE	1.0%
BROKEN	10% MAX.
TOTAL DAMAGE KERNELS	3.0% MAX.
MAX RADIATION	NORMAL
ADMIXTURE	1.0% MAX.
SIZES	6-9 MMUP
FIBER	7.0% MAX.
HUSKS	NO HUSKS
IMPURITIES	1.0% MAX.
TEST WEIGHT	54 POUNDS PER BUSHEL MIN
CROP YEAR	2022-2023
PACKAGING	PP Bags with PELining. /Bulk.



12.500 MT UP TO 300.000 MT  
X 12 MONTHS CONTRACTS

CIF /FOB

12.500 MT UP TO 300.000 MT  
SPOTS

CIF





**COMMERCIAL  
INFORMATION**



# STANDARD PROCEDURE

## STANDARD BASIC PROCEDURE

SEE OUR “GENERAL TERMS AND CONDITIONS” ANNEX FOR THE COMPLETE PROCEDURE FOR EACH TYPE OF PAYMENT GUARANTEE

BUYER SENDS LOI + ID (PASSPORT) OF THE SIGNATORY OR COMPANY CEO/MANAGER

1. SELLER SENDS A FCO TO THE BUYER
2. BUYER SIGNS AND RETURNS THE FCO WITH AN ICPO VIA A CORPORATE EMAIL BY THE BUYER TO THE ADDRESS [contact.sales @ \\_\\_\\_\\_\\_ .com](mailto:contact.sales@_____)
3. SELLER SENDS A DRAFT SALES AND PURCHASE AGREEMENT (SPA) TO THE BUYER
4. WITHIN 48 HOURS: BUYER SIGNS BACK THE SPA INPUTS AUTHORIZED SIGNER'S PASSPORT, PROOF THAT THE SIGNER IS AUTHORIZED TO SIGN THIS CONTRACT, THE INCORPORATION CERTIFICATE OF COMPANY AND SENDS ITS OWN COMPANY CIS/KYC AND THE CIS/KYC OF THE ISSUER OF THE FINANCIAL INSTRUMENT IF BUYER IS USING A FINANCIER TO ISSUE THE PAYMENT GUARANTEE AND BUYER SENDS BACK TO THE OFFICIAL EMAIL OF SELLER: [contact.sales@ \\_\\_\\_\\_\\_ .com](mailto:contact.sales@_____)
5. SELLER SIGNS THE SPA AND SENDS BACK ACCOMPANIED WITH THE PROFORMA INVOICE
6. BUYER RETURNS THE PROFORMA INVOICE SIGNED WITH AN RWA (READY WILLING AND ABLE) ISSUED BY BUYER'S BANK ON THE BUYER'S NAME TO SELLER'S BANK
7. AFTER HAVING BEEN SIGNED AND STAMPED MANUALLY BY THE SELLER AND BUYER, SELLER WILL SEND VIA THE “DOCUSIGN” SERVICE FOR THE MANAGEMENT OF ELECTRONIC SIGNATURES AND DIGITAL TRANSACTIONS (<https://www.docusign.com/>) AND DEEMED AS HAVING ORIGINAL VALUE WITH ALL THE ASSOCIATED LEGAL AND LEGAL SCOPE. IT WILL THEREFORE BE A SUBSTITUTE FOR THE ORIGINAL PAPER

## FOR CIF PROCEDURE (INCOTERMS2020):

For each month's delivery, within 3 banking days, Buyer pays by MT103/TT against the Official Set of Shipping Documents including BL and SGS Report AT LOADING PORT.

## FOR FOB PROCEDURE (INCOTERMS2020):

For each month's delivery, within 3 banking days, Buyer pays by MT103/TT against the Official Set of Documents SGS Report AT LOADING PORT (IN WAREHOUSE AT THE LOADING PORT).

## FOR SUGAR SHIPMENTS BY CONTAINERS:

Shipment by 27 MT containers for annual contract only - Minimum 10 FCL x 12 MONTHS - NOT FOR SPOT DEALS / NOT FOR BOATS CONTRACTS TRIAL - Payment by cash deal 40% / 60% AT LOADING PORT.





# PAYMENT GUARANTEES

## ACCEPTED PAYMENT GUARANTEES

LIST OF ACCEPTED PAYMENT GUARANTEES INSTRUMENTS. (SEE TERMS & CONDITIONS ANNEX FOR PROCEDURES AND DETAILS).

### SBLC TRANSFERABLE

#### FROM TOP 50 BANK

By SBLC 100% with our Company Fiduciary as first beneficiary, 100% Fully Cash-Backed, Irrevocable, Confirmed, Divisible, Transferable, Assignable and Unrestricted, Operative at sight at loading port via MT760 (Given as Guarantee only) - (Validity 365 +1 day)

### ESCROW ACCOUNT

#### IN SWISS BANK (REYL & Cie SA - INNOVATIVE BANK /INTESA SANPAOLOSpA)

Buyer puts the amount representing 1-month face value purchase in ESCROW ACCOUNT.  
Opened for 11 months as Guarantee only and payment of the last delivery (12<sup>th</sup> month).  
Seller bears all financial costs within REYL & Cie bank (creation and management costs of the Escrow account dedicated to the transaction /to the customer). No LC/SBLC Instrument is needed.

ALL FINANCIAL INSTRUMENT ARE ISSUED BY BUYER'S BANK (TOP 50 BANK) AND/OR MUST BE CONFIRMED BY ANY TOP 50 BANK.

### SBLC NON-TRANSFERABLE

#### FROM TOP 50 BANK

By SBLC 100% with our Company Fiduciary as first beneficiary, 100% Fully Cash-Backed, Irrevocable, Confirmed, Divisible, Non-Transferable, Assignable and Unrestricted, Operative at sight at loading port via MT760 (Given as Guarantee only) - (Validity 365 +1 day)

### BLOCK FUND

#### FROM TOP 50 BANK

IN FAVOR OF SELLER OR SELLER'S FIDUCIARY PARTNER via MT760  
(Given as Guarantee only) - (Validity 365 +1 day)

### OUR BANKS

### DLC/LC TRANSFERABLE

#### FROM TOP 50 BANK

By LC 100 % with our Company Fiduciary as first beneficiary, AUTO REVOLVING, Cash-Backed, Irrevocable, Confirmed, Divisible, Transferable and Unrestricted, Operative at sight at loading port via MT700 (Given as Guarantee only) - (Valid for 12 months)

### CASH DEAL

#### 30% DEPOSIT

#### 70% BALANCE PAYMENT BY TT-MT103

The buyer sends by TT-MT103 the amount representing 30% of the value of the month of delivery, as a deposit, and then the remaining balance of 70% is released by TT-MT103 at the LOADING PORT against the set of documents of which the SGS.



## TYPICAL SET OF DOCUMENTS - B/L

1. OCEAN BILL OF LADING MARKED 'FREIGHT PREPAID' AND CLEAN ON BOARD ISSUED TO THE ORDER
2. BILL OF LADING - MASTER SURRENDER
3. COMMERCIAL INVOICE
4. CERTIFICATE OF ORIGIN
5. CERTIFICATE OF WEIGHT AND QUALITY BY SGS AND IF BUYER'S MADE CIQ REPORT MADE AT LOADING PORT
6. EXPORT DECLARATION
7. PHYTOSANITARY CERTIFICATE
8. CARGO INSURANCE CERTIFICATE
9. PACKING LIST
10. PRODUCTION LIST /TRADE ABILITY
11. FUMIGATION CERTIFICATE
12. COVID-19 INSPECTION CERTIFICATE ISSUED BY THE MINISTRY OF HEALTH (DURING ACTIVE COVID)



SGS is internationally recognized for its high level of expertise and independence. Our capabilities give our customers access to our global resources in the production, refining and consuming countries of sugar. We deliver services of the highest integrity and provide inspection, analysis, guarantee services and risk management solutions for your raw and refined sugar.

### ANALYTICAL SERVICES

SGS has the state-of-the-art equipments to meet all your testing needs.

- Moisture
- Polarization
- Ashes
- Color
- Heavy metals
- Pesticides,
- Contaminants (GMO, mycotoxins, allergens)

### INSPECTION SERVICES

SGS helps companies to deliver products that constantly meet high quality standards as well as health, safety and environmental compliance.

- Vessel cleanliness
- Water tightness
- Control weighing
- Packing and marking verification
- Sampling at loading
- Draft survey
- E-Certificates

### GUARANTEE SERVICES

SGS has developed a comprehensive portfolio of guarantee services to eliminate risk elements such as quality and quantity discrepancies.

- Full Outturn Guarantee (FOG): SGS assumes the responsibility for weight differences between loading and discharge.
- Full Outturn Quality (FOQ): SGS assumes the responsibility for discrepancies in quality between loading and discharge.
- Comprehensive Cover (CC): SGS arranges marine insurance coverage in addition to an outturn guarantee is the form of an efficient package.
- Rejection Guarantee: SGS assumes the cost incurred if authorities at the discharge port reject a shipment.

Various types of cover are available on request.

### RISK MANAGEMENT

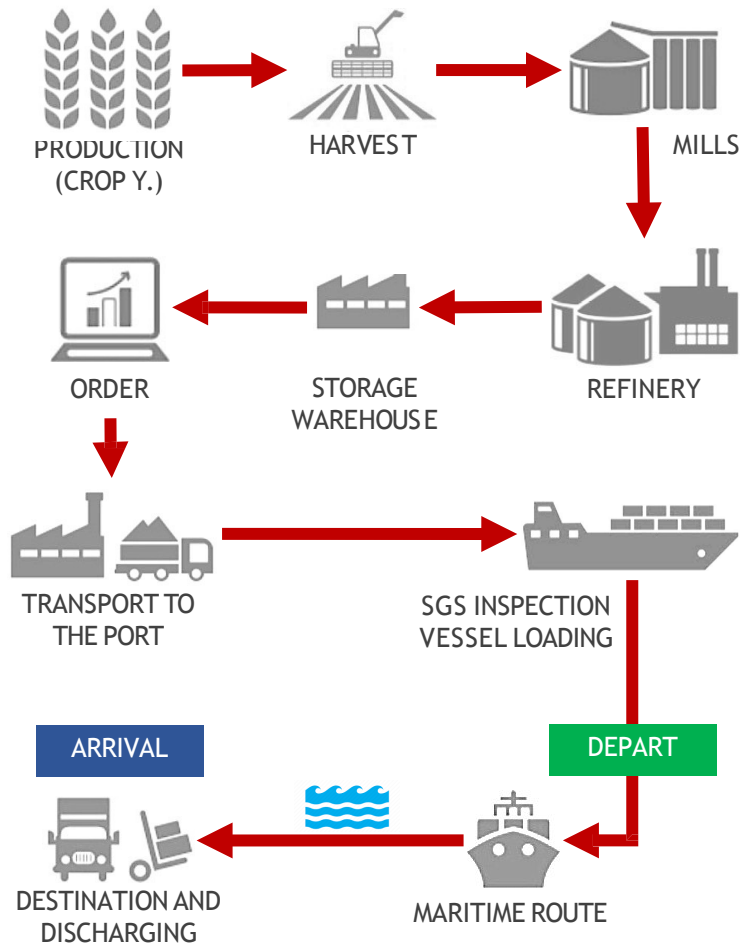
SGS network helps to secure your stocks at storage and processing locations throughout the world.

- Collateral management agreements
- Stock monitoring agreements

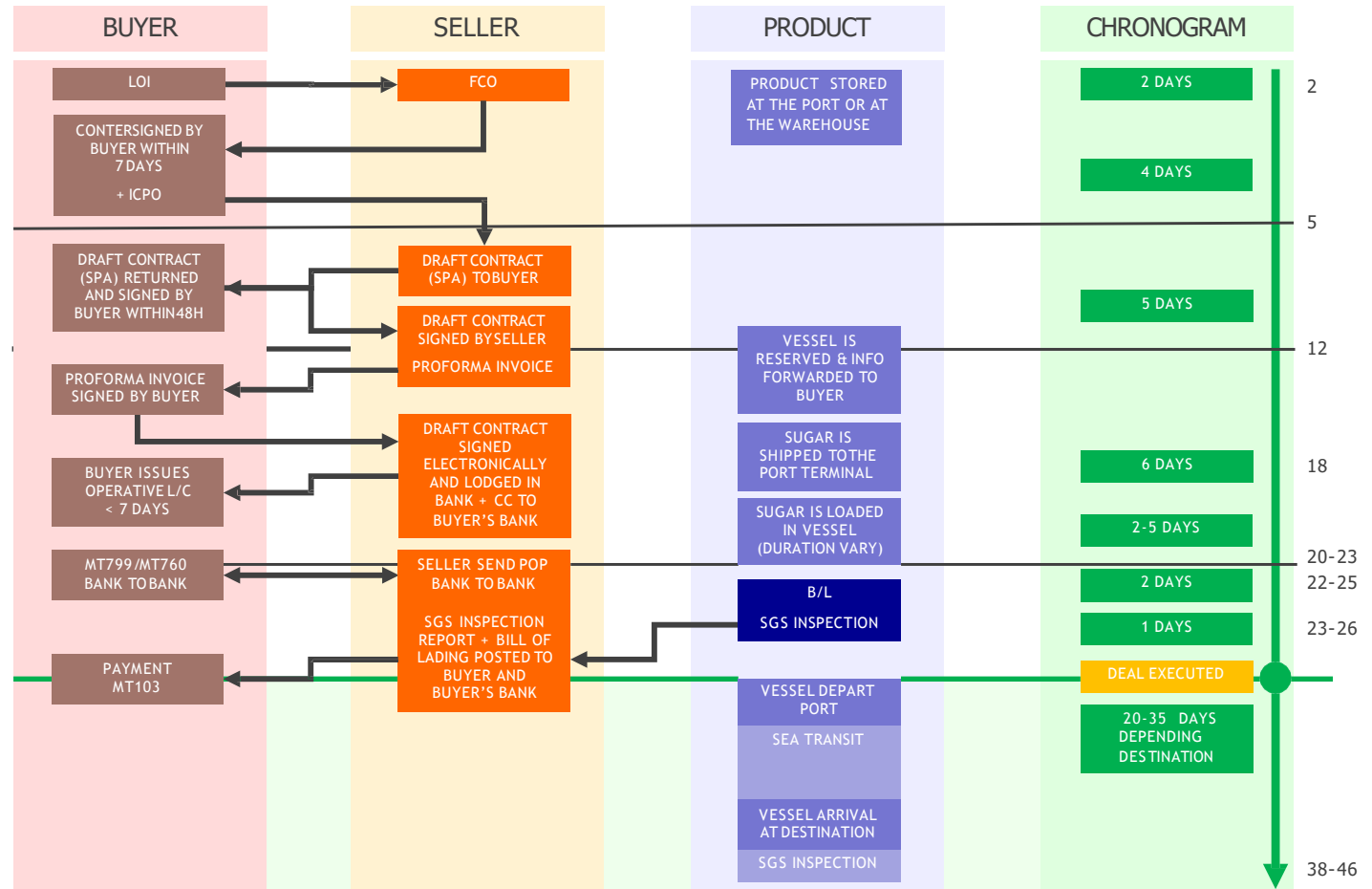
### WHY SGS ?

- Global independent network
- Fully integrated solutions
- Local capabilities
- Latest testing methods and technology
- ISO 17025 accredited

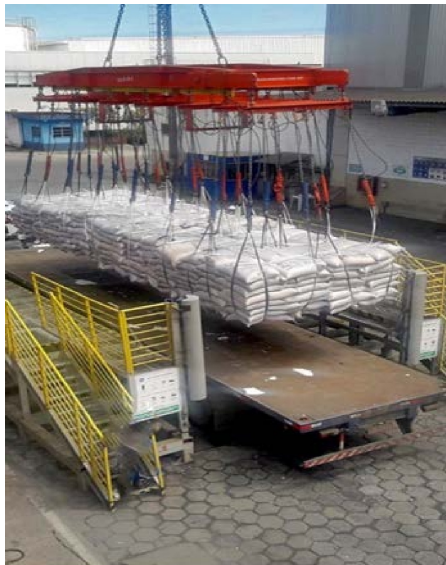
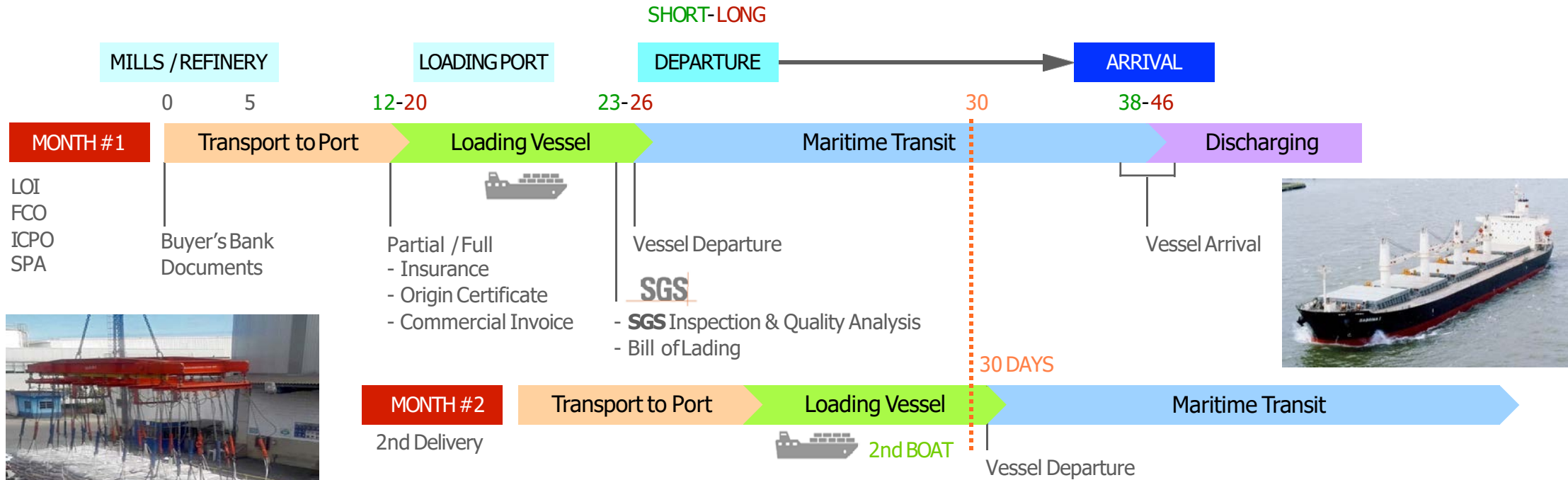
## TYPICAL PROCEDURE CHART



SIMPLIFIED TYPICAL PROCEDURE FLOWCHART



# TYPICAL CHRONOGRAM



**NOTE**

This chronogram is a guideline with theoretical durations in days and can vary depending on the order parameters (quantity, loading time, traffic at the port, destination, state of the sea, ...) and indicates the sequence with a min/max time between the loading on the vessel to the port of destination. It also indicates the overlap of a new month of delivery which requires loading and shipping the vessel before the previous one already reached its destination.

You can calculate the maritime route and duration at: <http://ports.com/sea-route/>  
 You can also track the vessel at: <https://www.vesselfinder.com>

Inspection, verification, testing, analysis, certification services by **SGS**



**UK: Address: 128 City Road, London United Kingdom**

**UK: Phone: +44 7700167222**

**US: Fax +1 866-2630-159**

**Email: [connect@globalontrade.com](mailto:connect@globalontrade.com)**